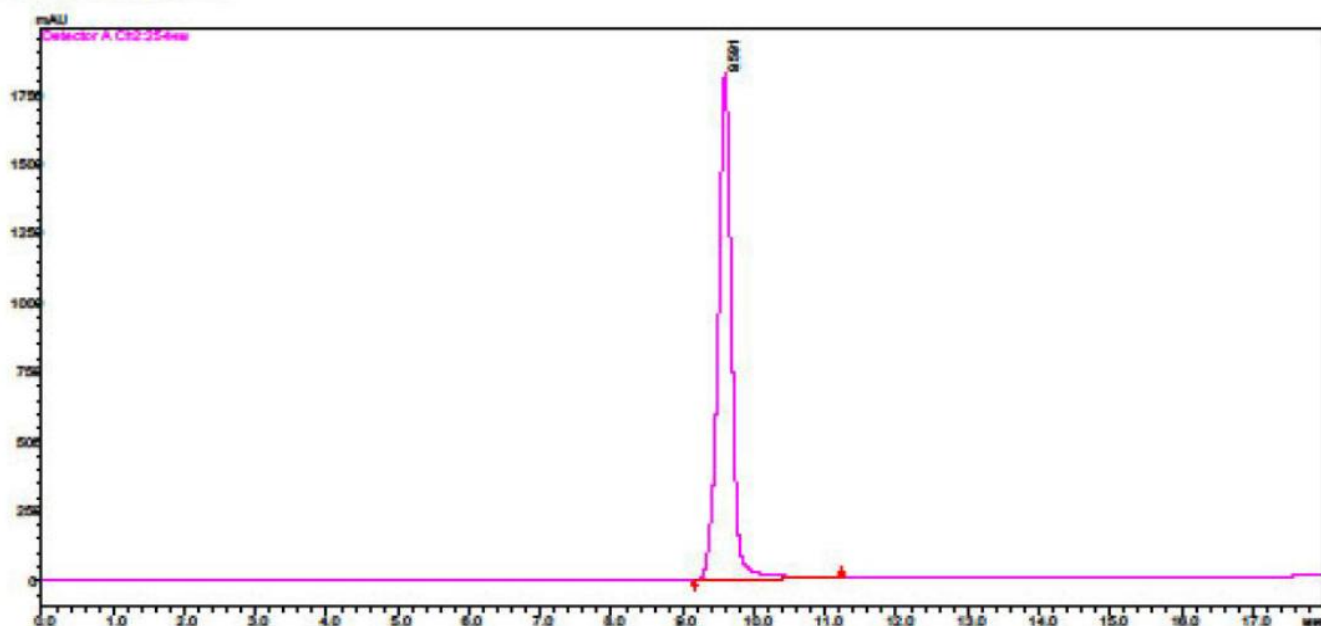


GLXC-01825 (LDN-27219)

==== Shimadzu LCsolution Analysis Report ====

Acquired by : Admin
Sample Name : TA_36
Injection Volume : 20 uL
Data File Name : TA_36.lcd
Method File Name : 5-95B, 15min_0,4ml.lcm
Report File Name : Default.lcr
Data Acquired : 16.10.2012 15:51:24
Data Processed : 16.10.2012 16:12:07
Comment : Temp=25C, C18, Waters Symmetry, 2.1x150 mm, 3.5µm

<Chromatogram>



Detector A Ch2 254 nm

Peak#	RT (min)	AREA	AREA (%)	HEIGHT	HEIGHT (%)
1	9.591	39073573	100.00	2741063	100,00
SUM		2223.3184	100.00	2741063	100.00

Phase A: 0.1% TFA in water;
Phase B: 0.1% TFA in ACN
5-95% phase B in 15 min, then 95% B
Flow rate 0.4 ml/min