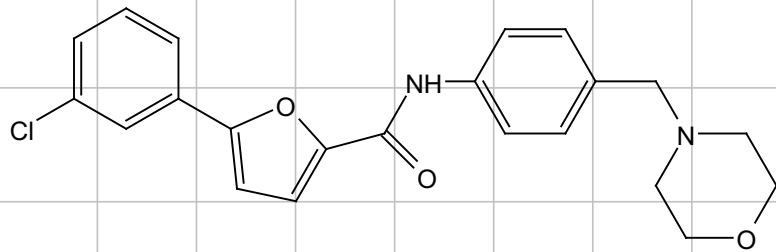


13-04-061-CAT024-20120529-HNMR  
13-04-061-CAT024-20120529-HNMR



8.11  
8.09  
7.95  
7.93  
7.72  
7.70  
7.68  
7.55  
7.53  
7.51  
7.49  
7.46  
7.44  
7.40  
7.39  
7.38  
7.37  
7.31  
7.30

3.57  
3.44  
3.42  
3.33  
3.31

2.50  
2.48  
2.34

solvent: d<sub>6</sub>-DMSO

1.00

0.98  
0.98  
2.01  
1.04  
1.05  
1.01  
2.79

4.06  
2.04

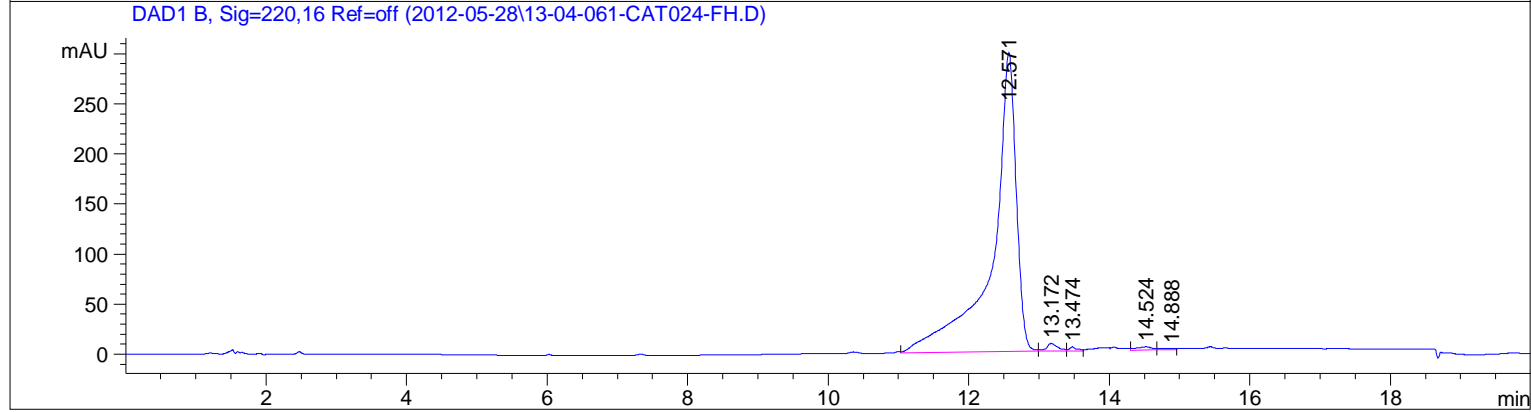
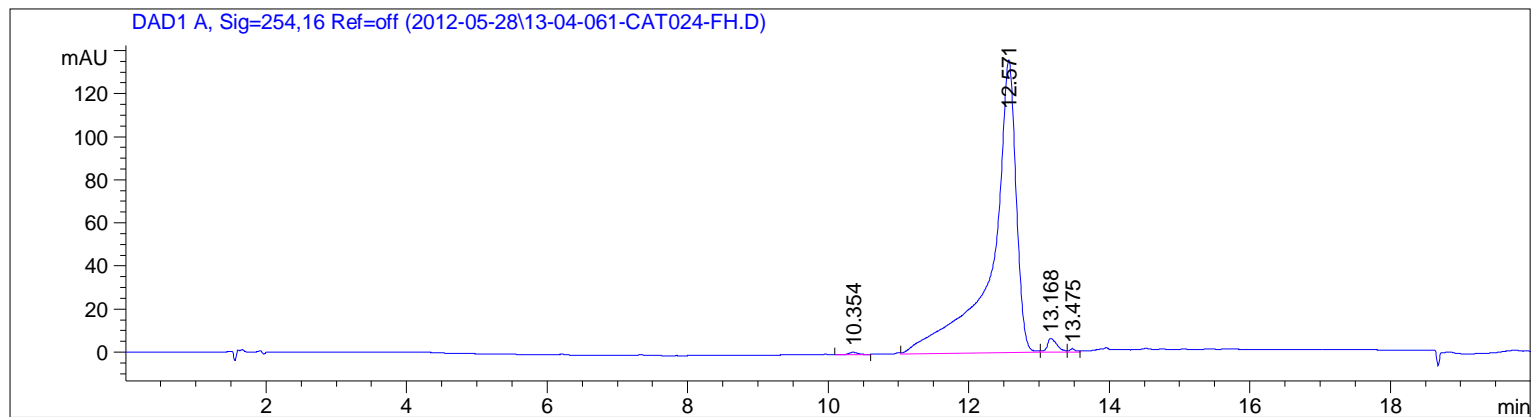
3.92

11.0 10.5 10.0 9.5 9.0 8.5 8.0 7.5 7.0 6.5 6.0 5.5 5.0 4.5 4.0 3.5 3.0 2.5 2.0 1.5

f1 (ppm)

1100  
1000  
900  
800  
700  
600  
500  
400  
300  
200  
100  
0  
-100

=====  
Acq. Operator : 13-04-061-CAT024-FH  
Acq. Instrument : Instrument 1 Location : Vial 11  
Injection Date : 5/28/2012 1:54:59 PM Inj Volume : 2.0 µl  
Acq. Method : C:\CHEM32\1\METHODS\GC-1.M  
Last changed : 5/28/2012 1:52:47 PM by D0062-ZC-19-13  
Analysis Method : C:\CHEM32\1\METHODS\GC-1.M  
Last changed : 5/24/2012 2:55:21 PM by D027-LQ-1305-2  
Method Info : new method



=====  
Fraction Information

Fraction collection off

No Fractions found.

=====  
Area Percent Report

Sorted By : Signal  
Multiplier: : 1.0000  
Dilution: : 1.0000  
Use Multiplier & Dilution Factor with ISTDs

Signal 1: DAD1 A, Sig=254,16 Ref=off

Peak #	RetTime [min]	Type	Width [min]	Area [mAU*s]	Height [mAU]	Area %
1	10.354	BB	0.1424	8.97168	1.00237	0.2673
2	12.571	VV	0.3293	3273.73926	135.77353	97.5494
3	13.168	VV	0.1613	64.06034	6.36900	1.9088
4	13.475	VV	0.0809	9.20813	1.60658	0.2744

Totals : 3355.97941 144.75148

Signal 2: DAD1 B, Sig=220,16 Ref=off

Peak #	RetTime [min]	Type	Width [min]	Area [mAU*s]	Height [mAU]	Area %
1	12.571	VV	0.3228	7085.39697	298.63498	97.4876
2	13.172	VV	0.1657	86.40716	7.53762	1.1889
3	13.474	VV	0.0981	29.18707	4.04778	0.4016
4	14.524	VV	0.2144	48.31221	3.09069	0.6647
5	14.888	VV	0.2197	18.69144	1.08095	0.2572

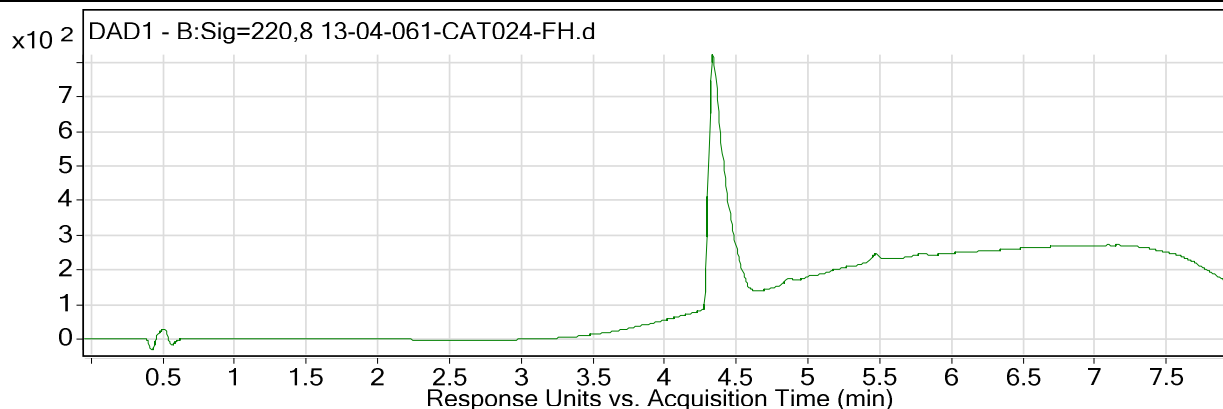
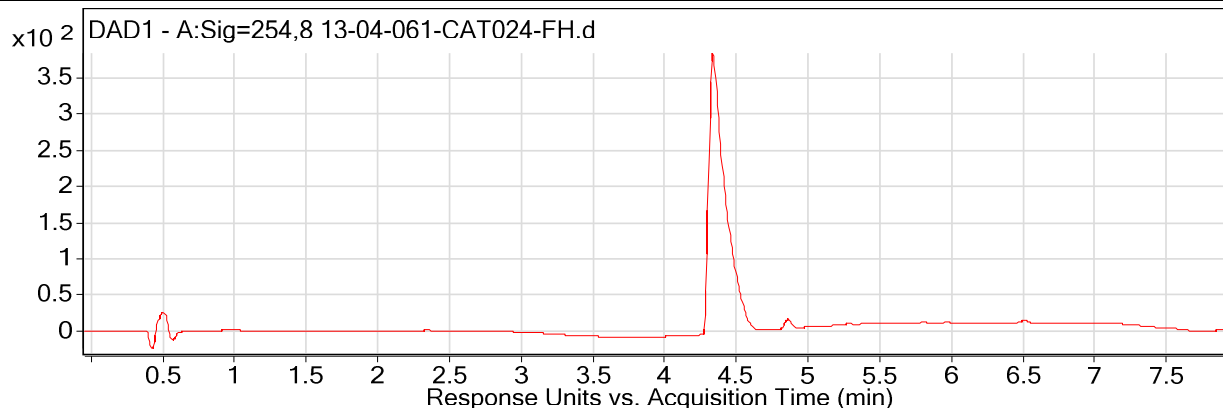
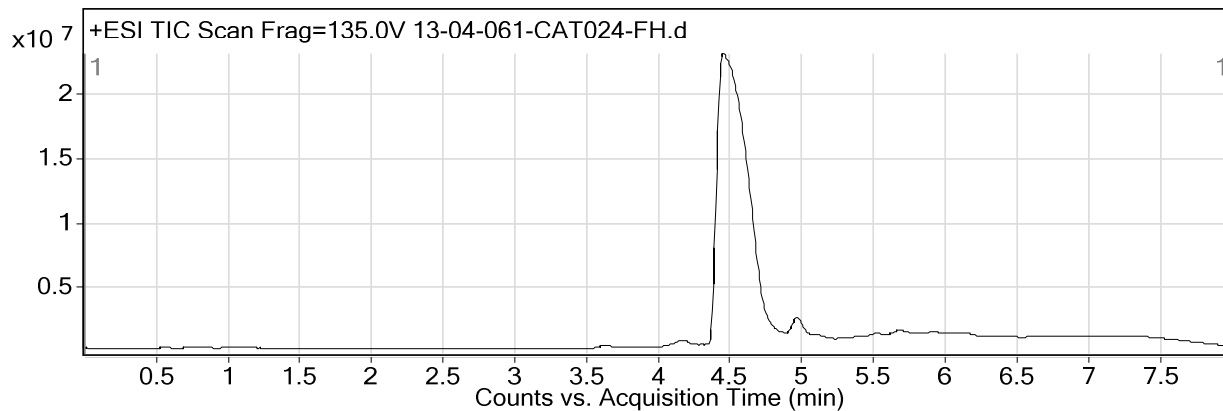
Totals : 7267.99486 314.39202

=====  
\*\*\* End of Report \*\*\*

# Qualitative Analysis Report

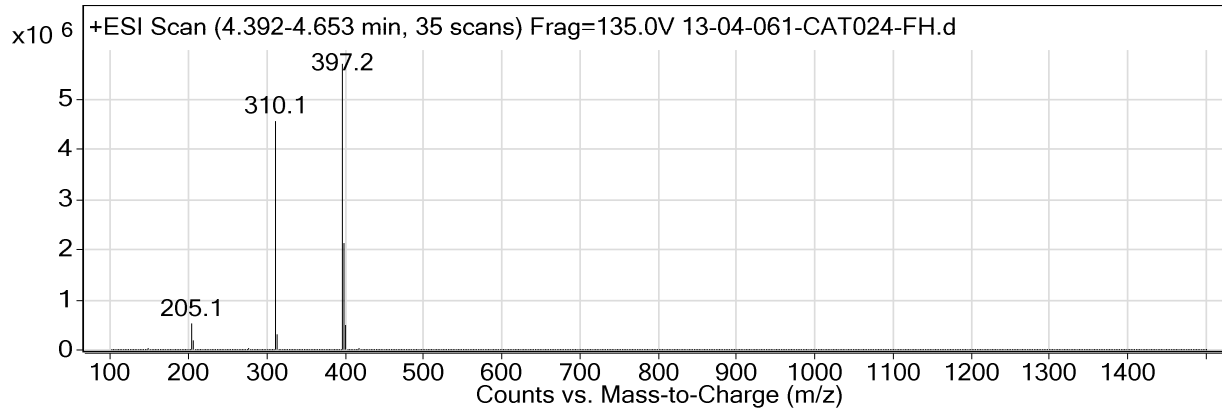
**Data Filename** 13-04-061-CAT024-FH.d **Sample Name** 13-04-061-CAT024-FH  
**Sample Type** Sample **Position** Vial 2  
**Instrument Name** Instrument 1 **User Name**  
**Acq Method** **Acquired Time** 5/28/2012 2:18:02 PM  
**IRM Calibration Status** Not Applicable **DA Method** 3m.m  
**Comment**  
**User Chromatograms**

**Fragmentor Voltage** 135 **Collision Energy** 0 **Ionization Mode** ESI



## User Spectra

**Fragmentor Voltage** 135 **Collision Energy** 0 **Ionization Mode** Esi



**Peak List**

<i>m/z</i>	<i>z</i>	Abund
205.1		512850
310.1	1	4567171
311.1	1	925101
312.1	1	1562078
313.1	1	304338
397.2	1	5686399
398.2	1	1480363
399.1	1	2116814
400.1	1	494995

**Fragmentor Voltage**

135

**Collision Energy**

0

**Ionization Mode**

Esi

# Qualitative Analysis Report

---