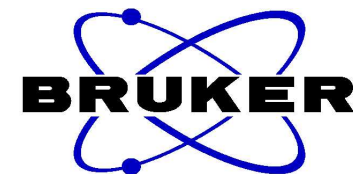


LYF-1113-1 1H NMR in DMSO

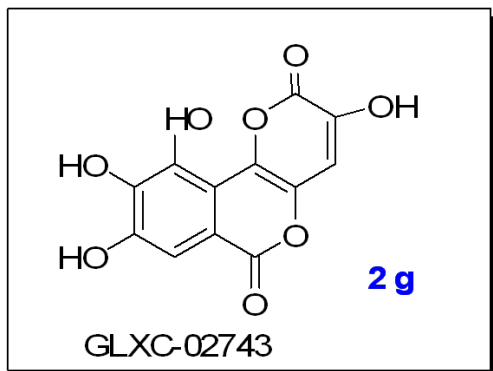


7.128
6.870

3.924

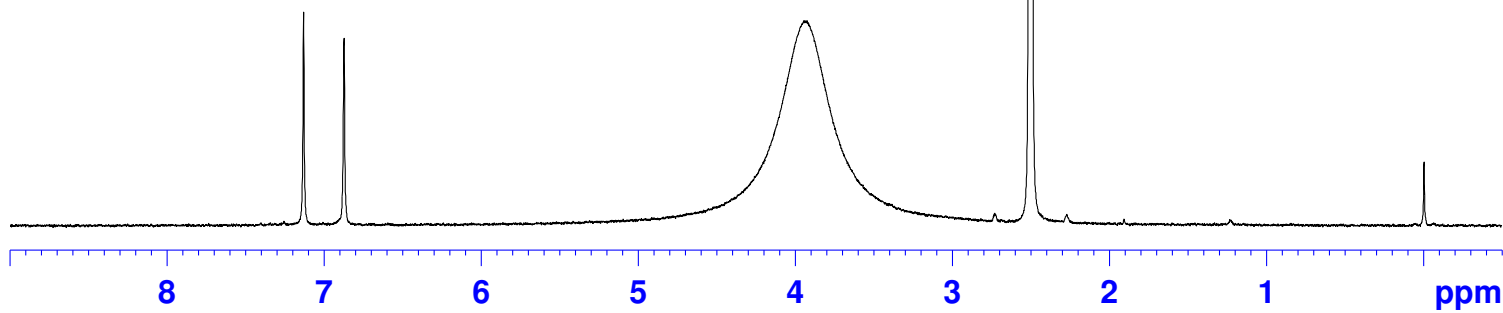
2.500

-0.005



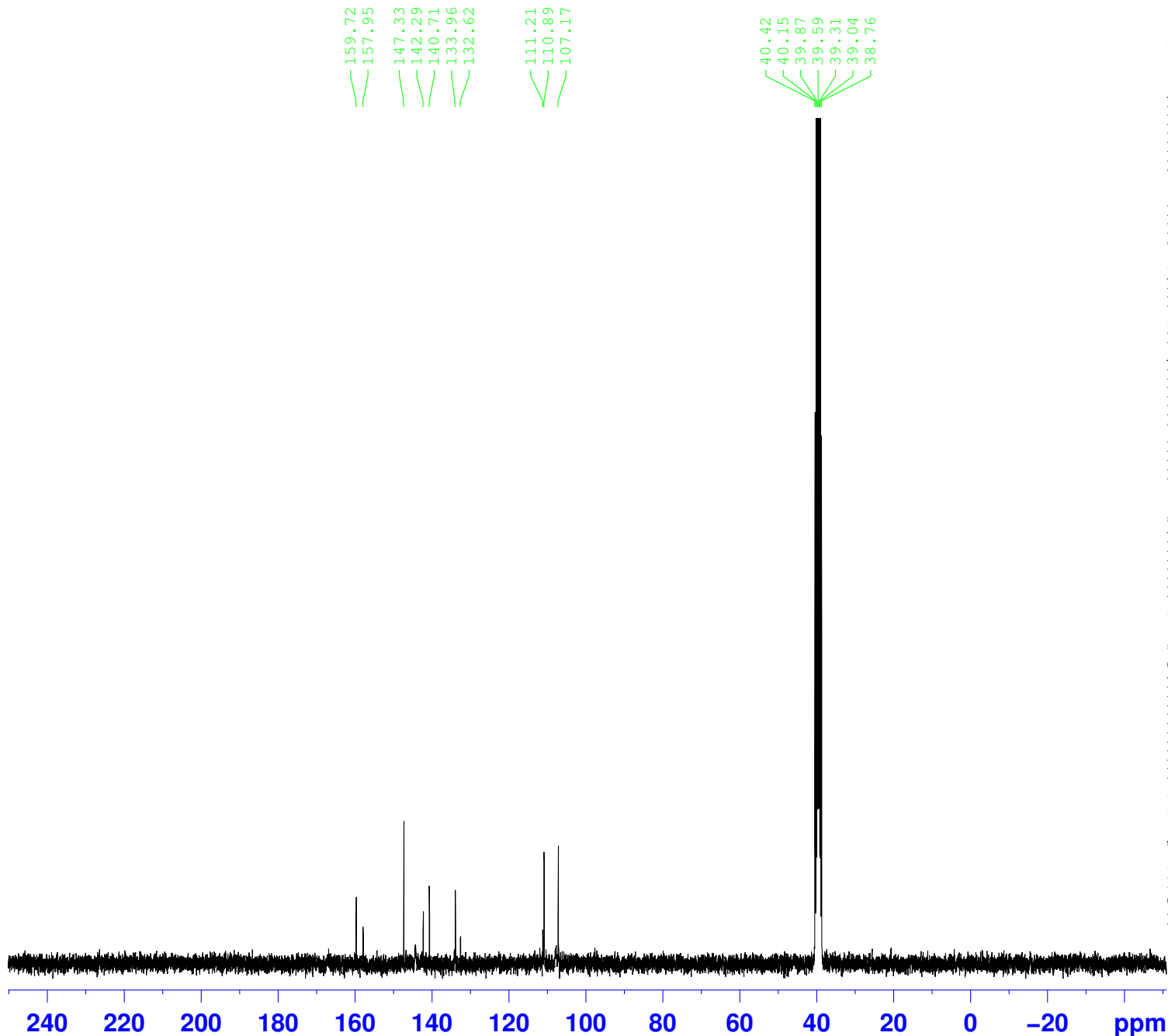
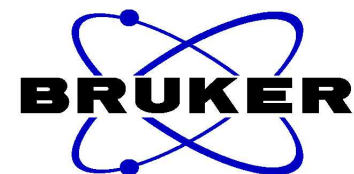
NAME 20121114-LYF-1113-1
EXPNO 1
PROCNO 1
Date_ 20121114
Time 14.33
INSTRUM spect
PROBHD 5 mm PABBO BB-
PULPROG zg30
TD 65536
SOLVENT DMSO
NS 16
DS 0
SWH 9014.423 Hz
FIDRES 0.137549 Hz
AQ 3.6351135 sec
RG 181
DW 55.467 usec
DE 6.50 usec
TE 294.1 K
D1 1.00000000 sec
TD0 1

===== CHANNEL f1 =====
NUC1 1H
P1 12.30 usec
PL1 1.00 dB
PL1W 10.29555321 W
SFO1 300.1318534 MHz
SI 32768
SF 300.1299962 MHz
WDW EM
SSB 0
LB 0.30 Hz
GB 0
PC 10.00



1.00
1.01

LYF-1114-2, ¹³C NMR in DMSO



```

NAME      20121115-LYF-1114-2
EXPNO     1
PROCNO    1
Date_     20121115
Time      17.20
INSTRUM   spect
PROBHD    5 mm PABBO BB-
PULPROG   zgdc
TD         65536
SOLVENT   DMSO
NS         10254
DS         0
SWH       22727.273 Hz
FIDRES    0.346791 Hz
AQ         1.4418420 sec
RG         1820
DW         22.000 usec
DE         6.50 usec
TE         294.0 K
D1         2.00000000 sec
D11        0.03000000 sec
TD0        1
    
```

```

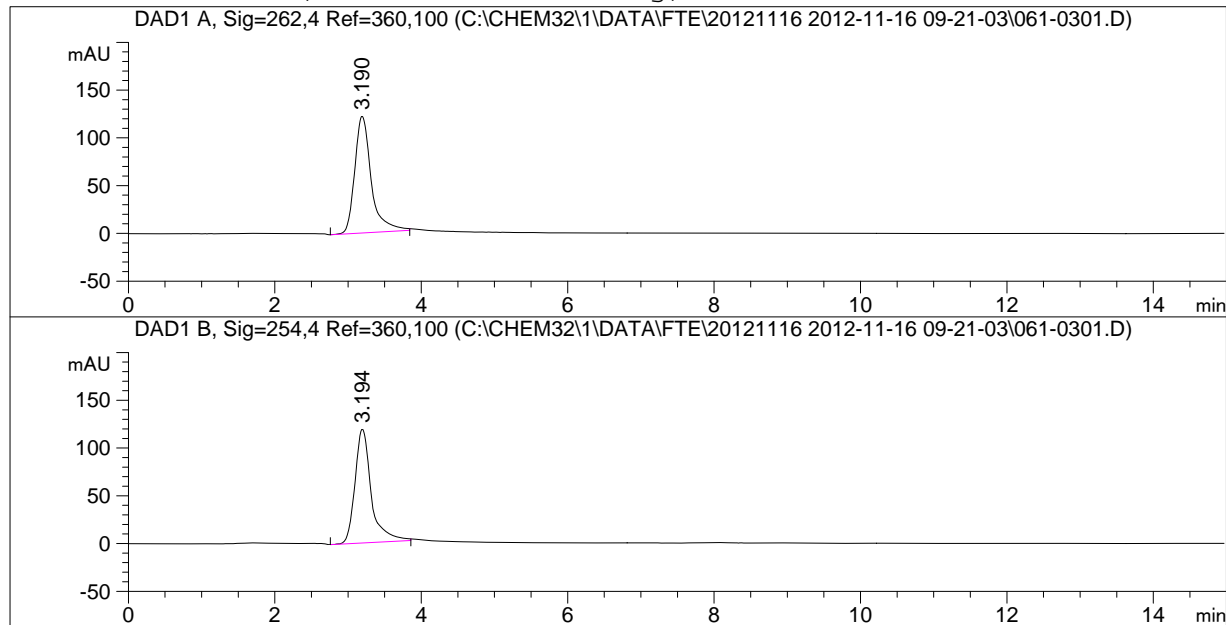
===== CHANNEL f1 =====
NUC1      13C
P1         9.80 usec
PL1       -1.00 dB
PL1W      43.00697708 W
SFO1      75.4752953 MHz
    
```

```

===== CHANNEL f2 =====
CPDPRG2   waltz16
NUC2      1H
PCPD2     80.00 usec
PL2        1.00 dB
PL12      17.26 dB
PL2W      10.29555321 W
PL12W     0.24358451 W
SFO2      300.1312005 MHz
SI         32768
SF         75.4677770 MHz
WDW        EM
SSB        0
LB         1.00 Hz
GB         0
PC         1.40
    
```

```

=====
Acq. Operator   : LIU                               Seq. Line :    3
Acq. Instrument : Instrument 1                       Location  : Vial 61
Injection Date  : 2012-11-16 9:54:15 AM            Inj       :    1
                                                    Inj Volume: 10 µl
Different Inj Volume from Sequence !      Actual Inj Volume: 5 µl
Acq. Method     : C:\Chem32\1\DATA\FTE\20121116    2012-11-16 09-21-03\TEST.M
Last changed    : 2012-11-16 9:21:01 AM by LIU
Analysis Method : C:\CHEM32\1\DATA\FTE\20121116    2012-11-16 09-21-03\TEST.M
Last changed    : 2012-11-16 4:20:27 PM by LIU
                (modified after loading)
  
```



=====
 Area Percent Report
 =====

```

Sorted By      :      Signal
Multiplier     :      1.0000
Dilution       :      1.0000
Use Multiplier & Dilution Factor with ISTDs
  
```

Signal 1: DAD1 A, Sig=262,4 Ref=360,100

Peak #	RetTime [min]	Type	Width [min]	Area [mAU*s]	Height [mAU]	Area %
1	3.190	BB	0.2350	1919.39429	122.34627	100.0000

Totals : 1919.39429 122.34627

Signal 2: DAD1 B, Sig=254,4 Ref=360,100

Peak #	RetTime [min]	Type	Width [min]	Area [mAU*s]	Height [mAU]	Area %
1	3.194	BB	0.2321	1842.52051	119.37900	100.0000

Totals : 1842.52051 119.37900

=====
 *** End of Report ***